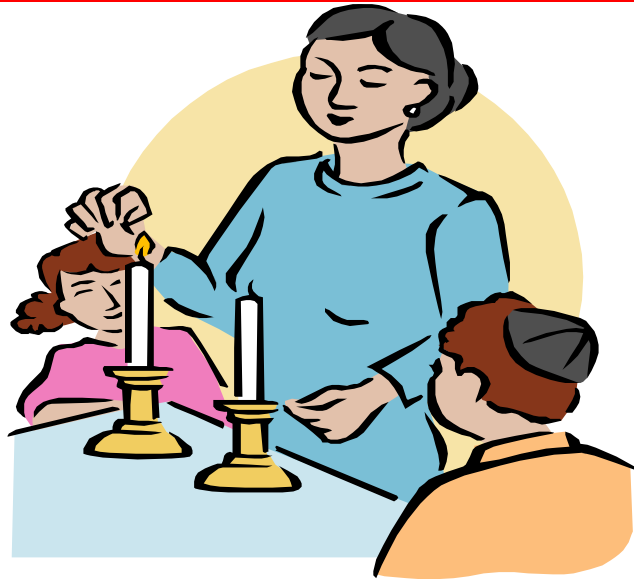


DUES FOR LIFE PROGRAM



Dues For Life Program 2010 OPTION # 1

\$6,000 Per Person or \$12,000 per family Get:

- **Dues Paid For Life**
- **Memorial Plaque worth \$400 per person (when fully paid)**
- **Name on Gold Plaque in Temple Lobby**
- **Up to three years to pay (minimum 1/3 per year)**
- **Refund of proportional payment if Temple moves or closes**

Dues For Life Program 2010 OPTION # 2

\$3,000 Per Person and Frozen Dues of \$300 per year Get:

- **No Increase in Dues for life**
- **Memorial Plaque worth \$400 per person (when fully paid)**
- **Name on Plaque in Temple Lobby**
- **Up to three years to pay (minimum 1/3 per year)**
- **Refund of proportional payment if Temple moves or closes**

Join this program which will help the Temple build a reserve and freeze or eliminate your Dues obligation. There may some very large Tax savings for participants by transferring appreciated stock in addition to regular tax deductions. Please call for additional information.

For Additional Information Call Temple at 276-6161 and leave message for David Stern

